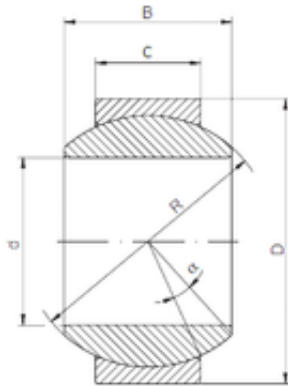




LY?MANUFACTURING CO.,LTD.

ISO GE 040 HS-2RS plain bearings



Bearing No. GE 040 HS-2RS

Size	40x68x40 mm
Bore Diameter	40 mm
Outer Diameter	68 mm
Width	40 mm
d	40 mm
D	68 mm
B	40 mm
C	25 mm
R	60 mm
Angle	17 °

GE 040 HS-2RS Bearing 2D drawings and 3D CAD models