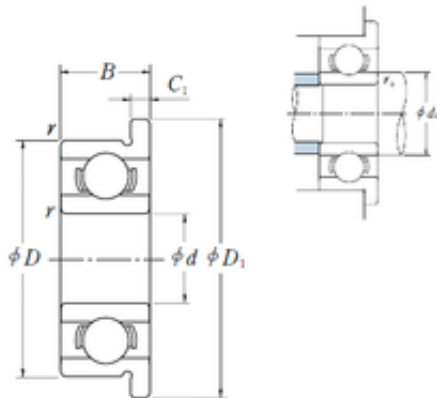




LY?MANUFACTURING CO.,LTD.

NSK MF52B deep groove ball bearings



Bearing No. MF52B

Size	2x6.2x2 mm
Bore Diameter	2 mm
Outer Diameter	6,2 mm
Width	2 mm
d	2 mm
D	5 mm
D1	6,2 mm
B	2 mm
r min.	0,1 mm
C1	0,6 mm
da min.	2,8 mm
ra max.	0,1 mm
Weight	0,21 Kg
Basic dynamic load rating (C)	187 kN
Basic static load rating (C0)	58 kN
(Grease) Lubrication Speed	85000 r/min
SRI	0.43
hidYobi	MF52B
LangID	1
D_	5
SREX	0.01
C	0.187
B_	2
hidTable	ecat_NSESBMF
C0r	6
Oil rpm	100000

MF52B Bearing 2D drawings and 3D CAD models



LY?MANUFACTURING CO.,LTD.

SRE	0.45
mass	0.21
GRS rpm	85000
ra	0.1
SRIX	0.01
Cr	19
SRIN	0
C_1	0.6
C0	0.058
fo	12.946
SREN	0
D_1	6.2
DE_	4.1
Prod_Type3	ESM_MD_WF_OT
da	2.8
DA_	0.8
Z_	7
yobi	MF52B
SDM_	3.3
r	0.1
KBRG	6102
DI_	2.5
B0	2